

WE30Ve



Its well balanced bridge style frame offers superior rigidity and results in a 30 taper vertical machining center that can do more than just drill and tap. Also available with an optional rotary pallet changer for added productivity.

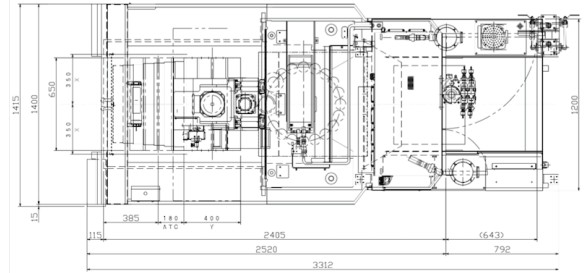
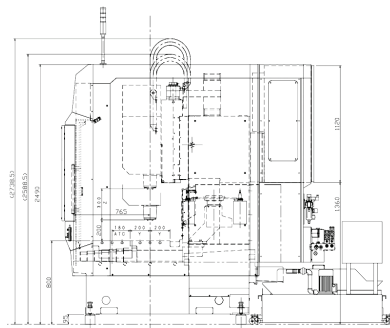
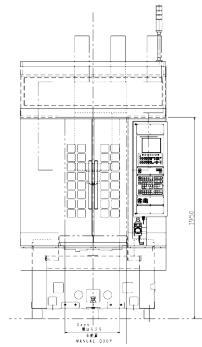


**ADVANCING THE TECHNOLOGY OF ULTRA-HIGH PERFORMANCE FOR
STAND-ALONE PRODUCTION, LEAN LINES OR AGILE MACHINING SYSTEMS**

**OUT-PERFORM
OUT-PRODUCE
OUT-LAST**

- High rigidity, high speed, and high productivity at affordable cost
- Bridge type construction offers superior rigidity against competition
- 12,000RPM direct coupled spindle with 82.7Nm of torque
- Armless 21 tool ATC with 2.6 second chip to chip
- Optional pallet changer available
- Machine width of only 4 feet offers compact footprint
- Easy adapts to ancillary loading systems

WE30V_e MACHINE SPECIFICATIONS



AXIS TRAVEL

X Axis	27.6"
Y Axis	15.7"
Z Axis	11.8"
Table top to spindle centerline	7.9" ~ 19.6"

TABLE

Work surface size	25.6" x 15.7"
Maximum work load	771 lbs.
Table surface profile	T-slotted table (0.55" x 3)

FEEDRATES

Rapid traverse (X/Y/Z)	1,968 IPM
Cutting feedrate	0 ~ 1,968 IPM
Acceleration/Deceleration (X/Y/Z)	1/1/1.1G
Feed motors, AC Servo	3.6 HP (X/Y/Z)

SPINDLE

Spindle taper	BT30 taper
Spindle bearing diameter	1.97" (2 Bearing)
Spindle power/type	7.3 HP/direct coupled
Spindle torque	82.7Nm
Spindle ramp-up time	1.76 seconds (10,000 RPM)
Rigid tapping (max. rpm)	4,000 RPM
Lubrication type	Greasepack

ACCURACY

Positioning, full stroke (X/Y/Z)	-10 micron
Repeatability	-10 micron

AUTOMATIC TOOL CHANGER

Magazine capacity	21
Tool change method	Armless
Maximum tool diameter	2.95"
with adjacent pockets empty	3.93"
Maximum tool length	9.8"
Maximum tool weight	6.6 lbs.
Tool change time (tool-tool)	1.9 seconds
Tool change time (chip-chip)	2.6 seconds

AUTOMATIC PALLET CHANGER (OPTION)

Pallet size	19.7" x 15"
Capacity per pallet/total	441 lbs./882 lbs.
Spindle nose to table surface	7.9" ~ 19.7"
Pallet surface	M16 x 15 tapped holes
Pallet change time	6.5 seconds

MACHINE ELECTRICS

AC 200/220V ± 10%, 3 Phase, 60Hz	11.9 KVA
----------------------------------	----------

MACHINE DIMENSIONS & WEIGHTS

L x W x H	99.2" x 47.2" x 107.9"
(length is machine only)	
Weight	9921 lbs.

STANDARD EQUIPMENT

- Fanuc OiMF control
- Fanuc 7.3 HP spindle drive
- Fanuc axis servo drives
- BT30 spindle taper
- 25.6" x 15.7" table surface
- 22 tool automatic tool changer
- 12,000 RPM direct coupled spindle
- Ceramic spindle bearings
- Spindle air curtain
- Pre-wired for coolant thru spindle
- 300L coolant tank
- Bed flush coolant
- Spindle flood coolant
- Manual pulse generator
- Spindle speed override
- Feedrate override
- Totally enclosed splash guard with manual operated doors
- Door interlock
- Inch/metric switchable capability
- Helical interpolation
- AI contouring control
- 1280m total program memory
- Number of programs 400
- 8.4" color LCD display
- 400 tool offsets
- Tool offset memory type C
- 48 sets of work coordinate system
- Mirror image
- Automatic tool length measurement
- Custom macro "B"
- Additional macro variables
- Coordinate rotation
- High speed skip function
- Embedded Ethernet

OPTIONS AVAILABLE

- BigPlus taper
- 20,000RPM spindle
- Rotary pallet changer
- Additional axis (4th axis)
- Lift up chip conveyor
- Spindle probe
- Simultaneous 5 axis table
- Coolant thru spindle
- Tool life management
- Other



Enshu (USA) Corporation
404 E. State Parkway
Schaumburg, IL 60173

Tel: (847) 839-8105
Fax: (847) 839-8226

www.enshuusa.com
info@enshuusa.com

ver. 082017